



# PREMIUM

*The Premium Collection by Vertex offers the best in class foodservice dinnerware, in the most diverse offering of bodies and body colors. From the exclusive magnesium Rubicon bodies, to London's ultra durable hi-alumina and the Euro classic porcelain bodies, Vertex has achieved the pinnacle of unrivaled quality dinnerware and aesthetics. You won't find a better combination of beauty, quality, and value than the Vertex Premium Collection.*

## **HIGHLIGHTS:**

- *Expansive body offering including Hi-Alumina, Porcelain, Magnesium, Black Porcelain and Natural Slate*
- *Decorated and undecorated shapes available*
- *Fourteen ranges in the collection*
  - *London Undecorated*
  - *London Moonstone*
  - *London Terra*
  - *Rubicon Undecorated*
  - *Rubicon Helix*
  - *Rubicon Twilight*
  - *Crystal Bay*
  - *Alpine*
  - *Grass Valley*
  - *Palm*
  - *Orbit*
  - *Obsidian*
  - *Elements*
  - *Slate*
- *Best uses*
  - *Fine dining*
  - *Banquets*
  - *High volume*
  - *Restaurants*



# LONDON

*With diverse shape options including mid-rim, wide rim, coupe and geometrics, London has always fit virtually anywhere. Now, with the addition of London Moonstone, there is nowhere London can't go.*

*London is at home in hotel banquets, casual or fine dining.*

*A wide array of accessories and miniatures allows London to complete your tabletop.*

## **HIGHLIGHTS:**

- *Fully glazed foot*
- *Aluminum oxide reinforced body*
- *Low profile for superior stackability*
- *Bone white body*
- *Three ranges in the collection*
  - *London Undecorated*
  - *London Moonstone*
  - *London Terra*
- *Best uses*
  - *Hotel and Casino banqueting*
  - *High volume*
  - *Restaurants*
- *Pair with London Terra, London Moonstone, and Brown Accessories*



# LONDON



Boasting a glazed foot and variety of shapes including coupes, mid-rim, wide rim and geometric shapes, London is perfect for all dining applications.

- *Aluminum oxide reinforced body for extra chip resistance*
- *Low profile for superior stacking*
- *Fifteen additional miniatures allows for menu specialization and matching accessories*
- *Pair with London Terra, London Moonstone and Brown Accessories*

## FEATURES





**Plate Mid Rim**  
**LD-6** 6 1/4" 3 dz  
**LD-7** 7" 3 dz  
**LD-8** 9" 2 dz  
**LD-16** 10 5/8" 1 dz  
**LD-21** 11 3/4" 1 dz



**Plate Uptown Wide Rim**  
**LD-U6** 6 1/2" 3 dz  
**LD-U22** 8" 2 dz  
**LD-U8** 9" 2 dz  
**LD-U9** 9 7/8" 2 dz  
**LD-U16** 10 3/8" 1 dz  
**LD-U21** 12 1/2" 1 dz



**Entrée Plate**  
**LD-E21** 11 1/2" 1 dz



**Coupe Plate**  
**LD-C6** 6" 3 dz  
**LD-C22** 8" 2 dz  
**LD-C16** 10" 2 dz  
**LD-C21** 12" 1 dz



**Oval Coupe Platter**  
**LD-13** 11" 1 dz  
**LD-14** 13 1/2" 1 dz



**Oval Platter**  
**LD-39** 8" 2dz



**Oval Platter  
Narrow Rim**  
**LD-N13** 11 1/4" 1 dz  
**LD-N14** 12 1/4" 1 dz



**Square Plate**  
**LD-S6** 6 1/2" 3 dz  
**LD-S22** 8 1/2" 2 dz  
**LD-S16** 10" 1 dz



**Square Plate**  
**LD-Q22** 8 1/2" 2 dz  
**LD-Q16** 10 1/2" 1 dz



**Rectangular Platter**  
**LD-R12** 6" x 10 1/2" 2 dz  
**LD-R20** 7 1/2" X 13" 1 dz



**Oblique Platter**  
**LD-0114** 13" x 7" 1 dz



**Oblique Platter**  
**LD-014** 13" x 3 1/2" 2 dz



LONDON ■ BOWLS



**Pasta Bowl/Rim Soup**  
**LD-3** 9" 10 oz 2dz



**Pasta Bowl Deep With Rim**  
**LD-27** 11 1/2" 18 oz 1dz



**Pasta Bowl Deep With Rim**  
**LD-23** 11 3/4" 18 oz 1dz



**Wok Bowl**  
**LD-W23** 11 3/4" 1dz



**Metro Bowl**  
**LD-M3** 9" 6 oz 2 dz  
**LD-M26** 10 1/4" 8 oz 2 dz  
**LD-M23** 11 1/2" 10 oz 1 dz



**Entrée Bowl**  
**LD-E23** 11 3/4" 10 oz 1dz



**Grand Bowl**  
**LD-77** 7 1/2" 48 oz 0.5dz  
**LD-79** 10" 96 oz 0.5dz



**Coupe Pasta Bowl**  
**LD-C26** 10" 36 oz 2dz



**Coupe Bowl**  
**LD-B50** 5" 12 oz 3dz



**Bouillon (Fits LD-2)**  
**LD-4D** 3 7/8" 8 oz 3dz



**Bouillon Stacking (Fits LD-T2)**  
**LD-4S** 4 5/16" 10 oz 3dz



**Fruit Bowl**  
**LD-11** 5 1/2" 8 oz 3dz



**Grapefruit Bowl**  
**LD-10** 6 1/2" 15 oz 3dz



**Fruit Bowl**  
**LD-32** 5 1/8" 5 oz 3dz

LONDON ■ CUPS / MUGS & SAUCERS



**Cup A.D. Stacking (Fits LD-36)**  
**LD-35** 2 5/8" 3 1/2 oz 3 dz



**Cup Stacking (Fits LD-2)**  
**LD-1S** 3 1/4" 7 oz 3 dz



**Cup (Fits LD-2)**  
**LD-1** 3 3/8" 7 oz 3 dz



**Cup (Fits LD-T2)**  
**LD-T1** 3 1/2" 8 oz 3 dz



**Mug (Fits LD-T2)**  
**LD-178** 2 7/8" 10 1/2 oz 3 dz



**Mug (Fits LD-T2)**  
**LD-17** 3 3/8" 12 oz 3 dz



**Saucer A.D.**  
**LD-36** 4 5/8" 3 dz



**Saucer**  
**LD-2** 6" 3 dz



**Saucer Double Well**  
**LD-T2** 6" 3 dz

LONDON ■ ACCESSORIES



**Ovalado Sauce Bowl**  
**LD-OSB** 4 1/4" x 3 1/4" 4 oz 2 dz



**Rhapsody Sauce Dish**  
**LD-MSD** 2 3/4" x 1 3/4" 1 oz 4 dz



**Artiste Sauce Dish**  
**LD-ESD** 3 1/2" 4 oz 2 dz



**Rondo Sauce Bowl**  
**LD-FB** 3 1/4" 4 oz 2 dz



**Quadrate Sauce Bowl**  
**LD-SSD** 2 3/8" 2 oz 4 dz



**Gyre Sauce Dish**  
**LD-RSD** 2 1/2" 2 oz 4 dz



**Aria Sauce Bowl**  
**LD-SSB** 3 1/2" 4 oz 2 dz



**Modulus Sauce Dish**  
**LD-ESSD** 3 1/8" x 2 7/16" x 3/4" 2 dz



**Moderne Sauce Dish**  
**LD-ISD** 5" x 3 3/4" 2 dz



**Amande Sauce Dish**  
**LD-ASD-S** 3 9/16" x 1 7/8" 1 oz 4 dz  
**LD-ASD-M** 4 13/16" x 2 1/2" 2 oz 4 dz  
**LD-ASD-L** 6" x 3 1/8" 4 oz 4 dz



**Trio Sauce Dish**  
**LD-TSD-S** 2 7/8" 1 oz 4 dz  
**LD-TSD-M** 4 1/8" 4 oz 4 dz  
**LD-TSD-L** 5 3/8" 7 oz 2 dz



**Salt & Pepper Shaker**  
**LD-SS** 3 1/2" 4 dz  
**LD-PS** 2 7/8" 4 dz



**Tea Pot**  
**LD-TP** 13 1/2 oz 1 dz  
**Tea Pot Lid for LD-TP**  
**LD-TL** 1 dz



**Creamer**  
**LD-CM3** 3 oz 3 dz  
**LD-CM** 8 1/2 oz 3 dz



**Creamer (w/o handle)**  
**LD-TCM** 3 oz 2 1/2" x 3 1/4" 3 dz



**Sugar Packet Holder**  
**LD-PH** 3 3/4" 4 dz



# LONDON MOONSTONE



London Moonstone is completely unique with a reactive glaze making each piece elegantly different. The dark matte finish makes food pop while the color embellishments highlight the cuisine. The glazed foot and alumina body make London Moonstone durable enough for any dining application.

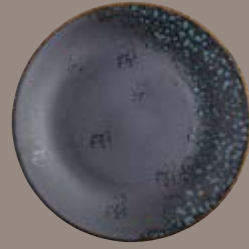
- *Three body colors to mix and match or accent existing tableware*
- *London Moonstone is based on super stylish coupe shapes*
- *Pair with London undecorated, London Terra and Brown Accessories*

## FEATURES





LONDON MOONSTONE ■ PLATES



**Coupe Plate**

<b>LMC-C6</b> 6" 3 dz	<b>LMC-C16</b> 10" 2 dz
<b>LMJ-C6</b> 6" 3 dz	<b>LMJ-C16</b> 10" 2 dz
<b>LMS-C6</b> 6" 3 dz	<b>LMS-C16</b> 10" 2 dz
<b>LMC-C22</b> 8" 2 dz	<b>LMC-C21</b> 12" 1 dz
<b>LMJ-C22</b> 8" 2 dz	<b>LMJ-C21</b> 12" 1 dz
<b>LMS-C22</b> 8" 2 dz	<b>LMS-C21</b> 12" 1 dz



**Entrée Plate**

<b>LMC-E21</b> 11 1/2" 1 dz
<b>LMJ-E21</b> 11 1/2" 1 dz
<b>LMS-E21</b> 11 1/2" 1 dz



**Oval Coupe Platter**

<b>LMC-13</b> 11" 1 dz	<b>LMC-14</b> 13 1/2" 1 dz
<b>LMJ-13</b> 11" 1 dz	<b>LMJ-14</b> 13 1/2" 1 dz
<b>LMS-13</b> 11" 1 dz	<b>LMS-14</b> 13 1/2" 1 dz



**Oblique Platter**

<b>LMC-014</b> 3 1/2" x 13" 2 dz
<b>LMJ-014</b> 3 1/2" x 13" 2 dz
<b>LMS-014</b> 3 1/2" x 13" 2 dz



**Oblique Platter**

<b>LMC-0114</b> 7" x 13" 1 dz
<b>LMJ-0114</b> 7" x 13" 1 dz
<b>LMS-0114</b> 7" x 13" 1 dz



**Square Plate**

<b>LMC-S6</b> 6 1/2" 3 dz	<b>LMC-S22</b> 8 1/2" 2 dz	<b>LMC-S16</b> 10" 1 dz
<b>LMJ-S6</b> 6 1/2" 3 dz	<b>LMJ-S22</b> 8 1/2" 2 dz	<b>LMJ-S16</b> 10" 1 dz
<b>LMS-S6</b> 6 1/2" 3 dz	<b>LMS-S22</b> 8 1/2" 2 dz	<b>LMS-S16</b> 10" 1 dz

LONDON MOONSTONE ■ BOWLS



**Wok Bowl**

<b>LMC-W3</b> 8 1/2" 2 dz	<b>LMC-W23</b> 11 3/4" 1 dz
<b>LMJ-W3</b> 8 1/2" 2 dz	<b>LMJ-W23</b> 11 3/4" 1 dz
<b>LMS-W3</b> 8 1/2" 2 dz	<b>LMS-W23</b> 11 3/4" 1 dz



**Coupe Pasta Bowl**

<b>LMC-C26</b> 10" 36 oz 2 dz
<b>LMJ-C26</b> 10" 36 oz 2 dz
<b>LMS-C26</b> 10" 36 oz 2 dz



**Coupe Bowl**

<b>LMC-B50</b> 5" 12 oz 3 dz
<b>LMJ-B50</b> 5" 12 oz 3 dz
<b>LMS-B50</b> 5" 12 oz 3 dz



**Bouillon Stacking (Fits LMC/J/S-2)**

<b>LMC-4S</b> 4 5/16" 10 oz 3 dz
<b>LMJ-4S</b> 4 5/16" 10 oz 3 dz
<b>LMS-4S</b> 4 5/16" 10 oz 3 dz

LONDON MOONSTONE ■ CUPS / MUGS & SAUCERS



**Cup (Fits LMC/J/S-2)**

<b>LMC-1</b> 3 1/2" 8 oz 3 dz
<b>LMJ-1</b> 3 1/2" 8 oz 3 dz
<b>LMS-1</b> 3 1/2" 8 oz 3 dz



**Mug (Fits LMC/J/S-2)**

<b>LMC-178</b> 2 7/8" 10 1/2 oz 3 dz
<b>LMJ-178</b> 2 7/8" 10 1/2 oz 3 dz
<b>LMS-178</b> 2 7/8" 10 1/2 oz 3 dz



**Saucer Double Well**

<b>LMC-2</b> 6" 3 dz
<b>LMJ-2</b> 6" 3 dz
<b>LMS-2</b> 6" 3 dz

LONDON MOONSTONE ■ ACCESSORIES



**Ovalado Sauce Bowl**

<b>LMC-OSB</b> 4 1/4" x 3 1/4" 4 oz 2 dz
<b>LMJ-OSB</b> 4 1/4" x 3 1/4" 4 oz 2 dz
<b>LMS-OSB</b> 4 1/4" x 3 1/4" 4 oz 2 dz



**Artiste Sauce Dish**

<b>LMC-ESD</b> 3 1/2" 4 oz 2 dz
<b>LMJ-ESD</b> 3 1/2" 4 oz 2 dz
<b>LMS-ESD</b> 3 1/2" 4 oz 2 dz



**Modulus Sauce Dish**

<b>LMC-ESSD</b> 3 1/8" x 2 7/16" x 3/4" 2 dz
<b>LMJ-ESSD</b> 3 1/8" x 2 7/16" x 3/4" 2 dz
<b>LMS-ESSD</b> 3 1/8" x 2 7/16" x 3/4" 2 dz

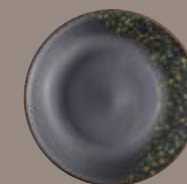


**Moderne Sauce Dish**

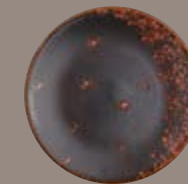
<b>LMC-ISD</b> 5" x 3 3/4" 2 dz
<b>LMJ-ISD</b> 5" x 3 3/4" 2 dz
<b>LMS-ISD</b> 5" x 3 3/4" 2 dz



**LMS: Sky Blue**



**LMJ: Jade**



**LMC: Terracotta**

Available Colors



# LONDON TERRA



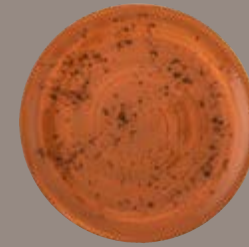
London Terra is specifically designed for today's dining trends – sustainable, authentic, and organic. London Terra is also durable and built to last with a glazed foot and high alumina body.

- *Four body colors to mix and match or accent existing tableware*
- *London Terra is based on super stylish coupe shapes*
- *Pair with London undecorated, London Moonstone and Brown Accessories*

## FEATURES







Coupe Plate

<b>LTW-C6</b>	6"	3 dz	<b>LTW-C16</b>	10"	2 dz
<b>LTJ-C6</b>	6"	3 dz	<b>LTJ-C16</b>	10"	2 dz
<b>LTC-C6</b>	6"	3 dz	<b>LTC-C16</b>	10"	2 dz
<b>LTS-C6</b>	6"	3 dz	<b>LTS-C16</b>	10"	2 dz
<b>LTW-C22</b>	8"	2 dz	<b>LTW-C21</b>	12"	1 dz
<b>LTJ-C22</b>	8"	2 dz	<b>LTJ-C21</b>	12"	1 dz
<b>LTC-C22</b>	8"	2 dz	<b>LTC-C21</b>	12"	1 dz
<b>LTS-C22</b>	8"	2 dz	<b>LTS-C21</b>	12"	1 dz



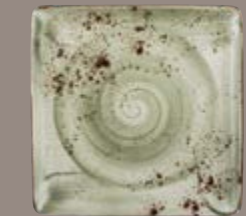
Entrée Plate

<b>LTJ-E21</b>	11 1/2"	1 dz
<b>LTC-E21</b>	11 1/2"	1 dz
<b>LTS-E21</b>	11 1/2"	1 dz



Oval Coupe Platter

<b>LTW-13</b>	11" 1 dz	<b>LTW-14</b>	13 1/2" 1 dz
<b>LTJ-13</b>	11" 1 dz	<b>LTJ-14</b>	13 1/2" 1 dz
<b>LTC-13</b>	11" 1 dz	<b>LTC-14</b>	13 1/2" 1 dz
<b>LTS-13</b>	11" 1 dz	<b>LTS-14</b>	13 1/2" 1 dz



Square Plate

<b>LTW-Q22</b>	8 1/2"	2 dz	<b>LTW-Q16</b>	10 1/2"	1 dz
<b>LTJ-Q22</b>	8 1/2"	2 dz	<b>LTJ-Q16</b>	10 1/2"	1 dz
<b>LTC-Q22</b>	8 1/2"	2 dz	<b>LTC-Q16</b>	10 1/2"	1 dz
<b>LTS-Q22</b>	8 1/2"	2 dz	<b>LTS-Q16</b>	10 1/2"	1 dz



Rectangular Platter

<b>LTW-R12</b>	6" x 10 1/2"	2 dz	<b>LTW-R20</b>	7 1/2" x 13"	1 dz
<b>LTJ-R12</b>	6" x 10 1/2"	2 dz	<b>LTJ-R20</b>	7 1/2" x 13"	1 dz
<b>LTC-R12</b>	6" x 10 1/2"	2 dz	<b>LTC-R20</b>	7 1/2" x 13"	1 dz
<b>LTS-R12</b>	6" x 10 1/2"	2 dz	<b>LTS-R20</b>	7 1/2" x 13"	1 dz



Oblique Platter

<b>LTC-014</b>	3 1/2" x 13"	2 dz	<b>LTC-014</b>	7" x 13"	1 dz
<b>LTJ-014</b>	3 1/2" x 13"	2 dz	<b>LTJ-0114</b>	7" x 13"	1 dz
<b>LTS-014</b>	3 1/2" x 13"	2 dz	<b>LTS-0114</b>	7" x 13"	1 dz



Wok Bowl

<b>LTC-W3</b>	8 1/2" 2 dz	<b>LTC-W23</b>	11 3/4" 1 dz
<b>LTJ-W3</b>	8 1/2" 2 dz	<b>LTJ-W23</b>	11 3/4" 1 dz
<b>LTS-W3</b>	8 1/2" 2 dz	<b>LTS-W23</b>	11 3/4" 1 dz



Entrée Bowl

<b>LTW-E23</b>	11 3/4" 10 oz 1 dz
<b>LTJ-E23</b>	11 3/4" 10 oz 1 dz
<b>LTC-E23</b>	11 3/4" 10 oz 1 dz
<b>LTS-E23</b>	11 3/4" 10 oz 1 dz



Grand Bowl

<b>LTW-77</b>	7 1/2" 48 oz 0.5 dz	<b>LTW-79</b>	10" 96 oz 0.5 dz
<b>LTJ-77</b>	7 1/2" 48 oz 0.5 dz	<b>LTJ-79</b>	10" 96 oz 0.5 dz
<b>LTC-77</b>	7 1/2" 48 oz 0.5 dz	<b>LTC-79</b>	10" 96 oz 0.5 dz
<b>LTS-77</b>	7 1/2" 48 oz 0.5 dz	<b>LTS-79</b>	10" 96 oz 0.5 dz



Coupe Pasta Bowl

<b>LTW-C26</b>	10" 36 oz 2 dz
<b>LTJ-C26</b>	10" 36 oz 2 dz
<b>LTC-C26</b>	10" 36 oz 2 dz
<b>LTS-C26</b>	10" 36 oz 2 dz



Coupe Bowl

<b>LTW-B50</b>	5" 12 oz 3 dz
<b>LTJ-B50</b>	5" 12 oz 3 dz
<b>LTC-B50</b>	5" 12 oz 3 dz
<b>LTS-B50</b>	5" 12 oz 3 dz



Bouillon Stacking (Fits LTW-2)

<b>LTW-4S</b>	4 5/16" 10 oz 3 dz
<b>LTJ-4S</b>	4 5/16" 10 oz 3 dz
<b>LTC-4S</b>	4 5/16" 10 oz 3 dz
<b>LTS-4S</b>	4 5/16" 10 oz 3 dz



Cup (Fits LTW-2)

<b>LTW-1</b>	3 1/2" 8 oz 3 dz
<b>LTJ-1</b>	3 1/2" 8 oz 3 dz
<b>LTC-1</b>	3 1/2" 8 oz 3 dz
<b>LTS-1</b>	3 1/2" 8 oz 3 dz



Mug (Fits LTW-2)

<b>LTW-178</b>	2 7/8" 10 1/2 oz 3 dz
<b>LTJ-178</b>	2 7/8" 10 1/2 oz 3 dz
<b>LTC-178</b>	2 7/8" 10 1/2 oz 3 dz
<b>LTS-178</b>	2 7/8" 10 1/2 oz 3 dz



Saucer Double Well

<b>LTW-2</b>	6" 3 dz
<b>LTJ-2</b>	6" 3 dz
<b>LTC-2</b>	6" 3 dz
<b>LTS-2</b>	6" 3 dz



Amande Sauce Dish

<b>LTW-ASD-S</b>	3 9/16" x 1 7/8" 1 oz 4 dz
<b>LTJ-ASD-S</b>	3 9/16" x 1 7/8" 1 oz 4 dz
<b>LTC-ASD-S</b>	3 9/16" x 1 7/8" 1 oz 4 dz
<b>LTS-ASD-S</b>	3 9/16" x 1 7/8" 1 oz 4 dz



<b>LTW-ASD-M</b>	4 13/16" x 2 1/2" 2 oz 4 dz
<b>LTJ-ASD-M</b>	4 13/16" x 2 1/2" 2 oz 4 dz
<b>LTC-ASD-M</b>	4 13/16" x 2 1/2" 2 oz 4 dz
<b>LTS-ASD-M</b>	4 13/16" x 2 1/2" 2 oz 4 dz



<b>LTW-ASD-L</b>	6" x 3 1/8" 4 oz 4 dz
<b>LTJ-ASD-L</b>	6" x 3 1/8" 4 oz 4 dz
<b>LTC-ASD-L</b>	6" x 3 1/8" 4 oz 4 dz
<b>LTS-ASD-L</b>	6" x 3 1/8" 4 oz 4 dz



Ovalado Sauce Bowl

<b>LTC-OSB</b>	4 1/4" x 3 1/4" 4 oz 2 dz
<b>LTJ-OSB</b>	4 1/4" x 3 1/4" 4 oz 2 dz
<b>LTS-OSB</b>	4 1/4" x 3 1/4" 4 oz 2 dz



Artiste Sauce Dish

<b>LTC-ESD</b>	3 1/2" 4 oz 2 dz
<b>LTJ-ESD</b>	3 1/2" 4 oz 2 dz
<b>LTS-ESD</b>	3 1/2" 4 oz 2 dz



Modulus Sauce Dish

<b>LTC-ESSD</b>	3 1/8" x 2 7/16" x 3/4" 2 dz
<b>LTJ-ESSD</b>	3 1/8" x 2 7/16" x 3/4" 2 dz
<b>LTS-ESSD</b>	3 1/8" x 2 7/16" x 3/4" 2 dz



Moderne Sauce Dish

<b>LTC-ISD</b>	5" x 3 3/4" 2 dz
<b>LTJ-ISD</b>	5" x 3 3/4" 2 dz
<b>LTS-ISD</b>	5" x 3 3/4" 2 dz



Gyre Sauce Dish

<b>LTW-RSD</b>	2 1/2" 2 oz 4 dz
<b>LTJ-RSD</b>	2 1/2" 2 oz 4 dz
<b>LTC-RSD</b>	2 1/2" 2 oz 4 dz
<b>LTS-RSD</b>	2 1/2" 2 oz 4 dz



Creamer (w/o handle)

<b>LTW-CM</b>	3" x 3" 3 oz 3 dz
<b>LTJ-CM</b>	3" x 3" 3 oz 3 dz
<b>LTC-CM</b>	3" x 3" 3 oz 3 dz
<b>LTS-CM</b>	3" x 3" 3 oz 3 dz



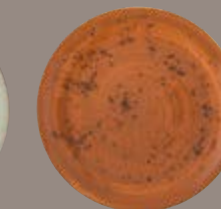
LTW: Terra White



LTS: Terra Sky



LTJ: Terra Jade



LTC: Terra Cotta

Available Colors





# RUBICON

*Nothing shows off food like a perfectly clean, white palette, and Rubicon offers the purest white body in foodservice. The unique super white body and amazingly diverse assortment of items makes Rubicon a favorite for chefs everywhere. Rubicon Twilight and Helix provides an embossed option for a complementary look. Like all Vertex China products, Rubicon can be decorated in house to personalize your tabletop, and nothing shows off your logo better than Rubicon's super white body.*

## **HIGHLIGHTS:**

- *Finely polished foot*
- *Magnesium reinforced body*
- *Super white body*
- *Three ranges in the collection*
  - *Rubicon Undecorated*
  - *Rubicon Helix*
  - *Rubicon Twilight*
- *Best uses*
  - *Hotel and Casino banqueting*
  - *High volume*
  - *Restaurants*

# RUBICON



Rubicon is the most unique dinnerware available. Nothing is whiter, stronger and accentuates food better. Rubicon decorates beautifully or is perfect as is in super white.

- *Magnesium reinforced body for strength and pristine white body*
- *Versatile and popular shapes in the body including coupes, 3 oval platter styles, rectangles and traditional rim plates*
- *Many small, unique accessories items included in range allowing the tabletop to be completed all with the same body*

## FEATURES



**SUPER  
WHITE**



**FINE  
EDGE**



**3  
CHIP  
WARRANTY**



**EVENTS**



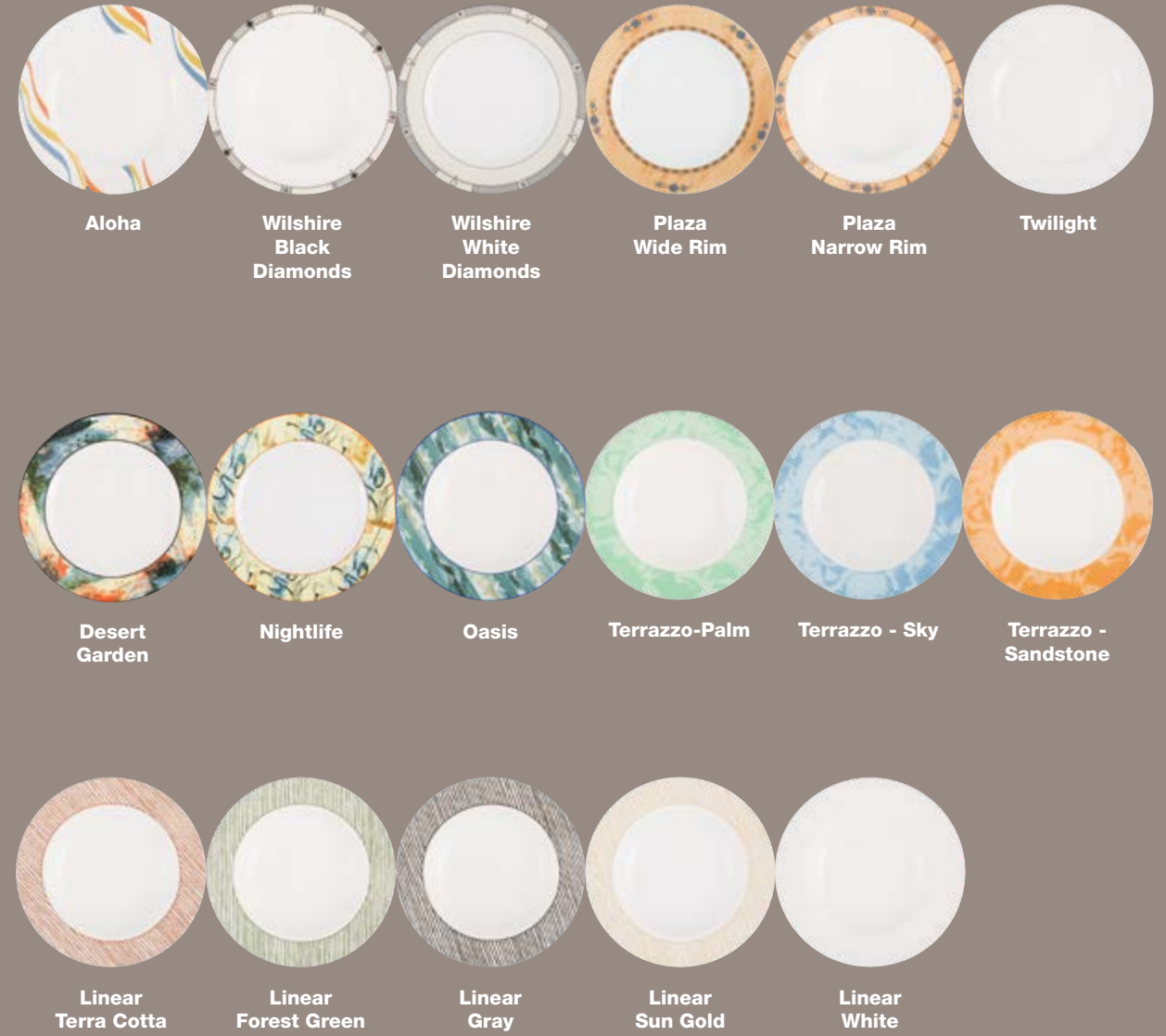
**UPSCALE**



# RUBICON



## Available Patterns



RUBICON ■ PLATES



**Plate**

**RB-6** 6 1/2" 3 dz  
**RB-7** 7" 3 dz  
**RB-22** 8" 2 dz  
**RB-8** 9" 2 dz  
**RB-16** 10 1/2" 1 dz  
**RB-20** 11 1/8" 1 dz  
**RB-21** 12" 1 dz  
**RB-25** 13 3/4" 1 dz



**Coupe Plate**

**RC-6** 6 1/2" 3 dz  
**RC-7** 7 1/2" 3 dz  
**RC-22** 8" 2 dz  
**RC-8** 9" 2 dz  
**RC-16** 9 7/8" 1 dz  
**RC-20** 11" 1 dz  
**RC-21** 12" 1 dz  
**RC-44** 13 1/2" 1 dz  
**RC-47** 16 1/4" 0.5 dz  
**RC-48** 18" 0.5 dz



**Rim Plate**

**RS-22** 8" 2 dz  
**RS-16** 10 1/2" 1 dz



**Oval Platter**

**RB-13** 11 3/4" 1 dz  
**RB-14** 14" 1 dz



**Coupe Platter**

**RS-13** 11 1/2" 1 dz  
**RS-14** 13 1/4" 1 dz



**Platter Narrow Rim**

**RN-14** 13 1/4" 1 dz



**Rectangle Pedestal Platter**

**RB-R7** 7" 3 dz  
**RB-R8** 9" 2 dz  
**RB-R16** 10 1/2" 1 dz  
**RB-R21** 12" 1 dz  
**RB-R25** 14" 1 dz



**Rectangle Platter**

**RB-H21** 12 1/2" x 6 1/4" 1 dz



**Mango Plate**

**RB-MP** 14 1/8" x 7 1/2" 1 dz

RUBICON ■ BOWLS



**Soup Plate**

**RB-3** 8 7/8" 9 oz 2 dz



**Pasta Bowl Deep with Rim**

**RB-26** 10 1/2" 8 oz 1 dz  
**RB-23** 12" 14 oz 1 dz



**Coupe Pasta Bowl**

**RB-84** 10 5/8" 18 oz 1 dz



**Pasta / Salad / Soup Bowl**

**RB-M7** 7" 25 oz 3 dz  
**RB-M8** 8" 45 oz 2 dz  
**RB-M9** 9" 55 oz 1 dz



**Fruit Bowl**

**RS-11** 5 1/8" 5 3/4 oz 3 dz



**Grapefruit Bowl**

**RS-10** 6 3/8" 19 oz 3 dz



**Coupe Fruit Bowl**

**RB-11** 5 3/8" 7 oz 3 dz



**Coupe Grapefruit Bowl**

**RB-10** 6 1/2" 13 oz 3 dz



**Flared Bowl Rolled Edge**

**RB-76** 5 7/8" 12 1/2 oz 3 dz  
**RB-77** 7" 20 oz 3 dz  
**RB-78** 8" 30 oz 3 dz  
**RB-79** 9 7/8" 46 oz 2 dz



**Flared Bowl**

**RB-73** 3 3/4" 5 oz 4 dz  
**RB-74** 4" 6 1/2 oz 4 dz



**Rice Bowl**

**RB-B40** 4" 6 1/2 oz 4 dz  
**RB-B45** 4 1/2" 9 oz 4 dz  
**RB-B50** 4 7/8" 13 oz 4 dz



**Coupe Bowl**

**RC-B78** 8 3/8" 28 oz 2 dz



**Handled Casserole Dish**

**RB-C6** 6" 12 oz 3 dz  
**RB-C22** 8" 21 oz 2 dz  
**RB-C9** 9" 29 oz 2 dz  
**RB-C16** 10" 43 oz 1 dz  
**RB-C21** 12" 65 oz 1 dz  
**RB-C44** 14" 96 oz 0.5 dz



**Bouillon Stacking (Fits RB-2)**

**RB-4S** 4" 8 oz 3 dz



**Quadrate Bowl**

**RB-QB** 4 1/2" 8 oz 6 dz



**Casserole / Soup Tureen**

**RB-S8** 8" 35 oz 1 dz  
**RB-S9** 9" 44 oz 1 dz  
**RB-S10** 10" 65 oz 1 dz



**Oval Pot with Lid**

**RB-OP** 8 1/4" x 5 1/4" 9 oz 1 dz



**Soup / Sugar Bowl with Lid**

**RB-F3** 4" 9 oz 1 dz



**Soup Bowl with Lid**

**RB-FS3** 4" 12 oz 1 dz



RUBICON ■ CUPS / MUGS & SAUCERS



**Cup A.D. Stacking (Fits RB-36)**  
**RB-35** 2 5/8" 4 oz 4 dz



**Cup Stacking (Fits RB-2)**  
**RB-1S** 3" 7 oz 3 dz



**Tall Cup (Fits RB-2)**  
**RB-1** 3 5/8" 7 1/2 oz 3 dz



**Tea Cup**  
**RB-54** 3 3/8" 5 oz 3 dz



**Tahoe Cup (Fits RB-2)**  
**RB-17** 3 1/8" 9 oz 3 dz



**Lid For Tahoe Cup**  
**RB-17L** 1 dz



**Tea Cup (with Saucer & Lid)**  
**RB-T3** 3 3/4" 6 oz 2 dz



**Rolled Edge Chinese Tea Cup**  
**RB-45** 3" 4 1/2 oz 3 dz



**Summit Mug Stackable**  
**SM-RB** 3 1/4" 10 oz 3 dz



**Saucer A.D.**  
**RB-36** 4 3/4" 4 dz



**Saucer**  
**RB-2** 6" 3 dz

RUBICON ■ ACCESSORIES



**Round Divided Sauce Dish**  
**RB-DR** 3 7/8" 6 dz



**Square Divided Sauce Dish**  
**RB-DS** 3 3/8" 6 dz



**3-Compartment Sauce Dish**  
**RB-D3** 5 1/2" x 3 1/8" 4 dz



**Deep Dish**  
**RB-D28** 2 3/4" 1 1/2 oz 6 dz  
**RB-D40** 4" 3 oz 6 dz  
**RB-D50** 4 3/4" 5 oz 6 dz



**Coupe Square Tasting Dish**  
**RB-TD4** 4" 3 dz  
**RB-TD6** 5" 2 dz  
**RB-TD8** 7" 2 dz



**Condiment Bottle**  
**RB-CB** 4 oz 2 dz  
**Lid For Condiment Bottle**  
**RB-CBL** 1 dz



**Round Spice Box with Lid**  
**RB-LB** 2 3/8" 3 oz 6 dz



**Tooth Pick Holder**  
**RB-TH** 2" 6 dz



**Tea Pot**  
**RB-TP3** 35 oz 1 dz



**Creamer**  
**RB-CM** 2 3/4" 5 1/2 oz 3 dz



**Sugar Packet Holder**  
**RB-PH** 3 1/2" x 2 1/2" x 2" 3 dz



**Spoon**  
**RB-SP7L** 4 7/8" 1 dz



**Spice Spoon (S)**  
**RB-S** 5" 1 dz



**Spice Spoon (L)**  
**RB-SL** 3 5/8" 1 dz



**Spoon Rest**  
**RB-SR** 3 3/4" 1 dz



**Chopsticks Rest**  
**RB-CS** 2 3/8" 1 dz

# RUBICON HELIX



Super white Rubicon comes alive with the gentle hand sculptured embossing of Helix. Classic concentric circles shaped by a hand carved mold gives every piece of Helix a one of a kind look. The super thin rim of Helix is a quintessential characteristic of fine dining dinnerware, but the amazingly strong body allows Helix to offer the most refined banquet service imaginable.

- *Ultra unique and stylish deep plates help create exceptional food presentations*
- *Helix has graceful cups and saucers for impeccable coffee and tea service*
- *Oval platters, a variety of bowls and hollowware makes Helix a full range*

## FEATURES



**SUPER  
WHITE**



**FINE  
EDGE**



**3  
CHIP  
WARRANTY**



**EVENTS**



**UPSCALE**





RUBICON-HELIX ■ PLATES



Plate			
<b>RH-6</b>	6 1/8"	3 dz	<b>RH-16</b> 10 5/8" 1 dz
<b>RH-7</b>	7 1/8"	3 dz	<b>RH-20</b> 11 1/8" 1 dz
<b>RH-8</b>	9"	2 dz	<b>RH-21</b> 11 7/8" 1 dz



Coupe Oval Platter	
<b>RH-13</b>	11 1/2" 1 dz
<b>RH-14</b>	13" 1 dz
<b>RH-28</b>	14" 1 dz

RUBICON-HELIX ■ BOWLS



**Rim Soup / Pasta Bowl**  
**RH-G3** 9" 2 dz



**Wok Bowl**  
**RH-3** 9 1/8" 32 oz 2 dz  
**RH-23** 11 1/8" 42 oz 1 dz



**Fruit / Grapefruit Bowl**  
**RH-11** 5 1/4" 7 oz 3 dz  
**RH-10** 6 1/2" 9 oz 3 dz



**Bouillon Stacking (Fits RH-2)**  
**RH-4S** 4" 9 oz 3 dz

RUBICON-HELIX ■ CUPS / MUGS & SAUCERS



**Cup A. D. Stacking (Fits RH-36)**  
**RH-35** 2 1/2" 3 1/2 oz 3 dz



**Cup (Fits RH-2)**  
**RH-1** 3 1/2" 7 1/2 oz 3 dz



**Cup Stacking (Fits RH-2)**  
**RH-1S** 3 1/4" 8 oz 3 dz



**Mug (Fits RH-2)**  
**RH-17** 3 1/4" 10 oz 3 dz



**Saucer A.D.**  
**RH-36** 4 5/8" 3 dz



**Saucer Double Well**  
**RH-2** 5 7/8" 3 dz

# RUBICON TWILIGHT



Based on Rubicon's super white body and amazing strength, Rubicon Twilight shines with a subtle rim embossing. Featuring all the items needed for banqueting use, and sharing the Rubicon undecorated accessories, Twilight is ideal in many applications.

- Magnesium reinforced body for strength and pure white body color
- Mix in with Rubicon undecorated items to extend the range

## RUBICON-TWILIGHT ■ PLATES



### Plate

<b>RB-6-TL</b>	6 1/2"	3 dz
<b>RB-7-TL</b>	7"	3 dz
<b>RB-8-TL</b>	9"	2 dz
<b>RB-16-TL</b>	10 1/2"	1 dz
<b>RB-20-TL</b>	11 1/8"	1 dz
<b>RB-21-TL</b>	12"	1 dz

## RUBICON-TWILIGHT ■ BOWLS



### Soup Plate

**RB-3-TL** 8 7/8" 9 oz 2 dz



### Coupe Pasta Bowl

**RB-84-TL** 10 5/8" 18 oz 1 dz



### Pasta Bowl Deep With Rim

**RB-26-TL** 10 1/2" 8 oz 1 dz  
**RB-23-TL** 12" 14 oz 1 dz



### Fruit (Coupe)

**RB-11-TL** 5 1/8" 5 3/4 oz 3 dz



### Grapefruit (Coupe)

**RB-10-TL** 6 3/8" 19 oz 3 dz



### Bouillon Stacking (Fits RB-2-TL)

**RB-4S-TL** 4" 8 oz 3 dz

## RUBICON-TWILIGHT ■ CUPS / MUGS & SAUCERS



### Cup Stacking (Fits RB-2-TL)

**RB-1S-TL** 3 1/4" 7 oz 3 dz



### Tall Cup (Fits RB-2-TL)

**RB-1-TL** 3 5/8" 7 1/2 oz 3 dz



### Tahoe Cup (Fits RB-2-TL)

**RB-17-TL** 3 1/8" 9 oz 3 dz



### Summit Mug Stackable

**SM-RB-TL** 3 1/4" 10 oz 3 dz



### Saucer

**RB-2-TL** 6" 3 dz

## FEATURES



**SUPER WHITE**



**FINE EDGE**



**CHIP WARRANTY**



**EVENTS**



**UPSCALE**



# EURO

*Porcelain is the # 1 material in foodservice dinnerware, and it's no wonder considering the combination of light weight, strength and a body color that accentuates food. The Vertex China Euro collection includes four unique shapes that will cover both any operational needs and aesthetic requirements.*

## **HIGHLIGHTS:**

- *Finely polished foot*
- *Best quality porcelain body*
- *Bright white body color*
- *Four ranges in the collection*
  - *Crystal Bay*
  - *Alpine*
  - *Grass Valley*
  - *Palm*
- *Best uses*
  - *Hotel and Casino banqueting*
  - *High volume*
  - *Restaurants*
- *Pairs with Universal collection*

# CRYSTAL BAY



Nothing is more elegant than Crystal Bay's bright white porcelain body and concentric embossed design on the rim.

- *Lightweight porcelain body*
- *A variety of shapes available from deep plates to squares and rectangles allowing Crystal Bay to work with any cuisine and décor*
- *Pair with Universal accessories to complete your tabletop*

## FEATURES



BRIGHT  
WHITE



FINE  
EDGE



1  
CHIP  
WARRANTY



POLISHED  
FOOT



EVENTS



UPSCALE



CRYSTAL BAY ■ PLATES



Plate

**CB-6** 6 1/2" 3 dz  
**CB-7** 7" 3 dz  
**CB-8** 9 1/4" 2 dz  
**CB-16** 10 1/2" 1 dz



Plate Signature

**CB-S25** 11 15/16" (4 3/4") 1 dz



Plate Signature

**CB-S27** 11 15/16" (6 1/4") 1 dz



Oblong Platter

**CB-93** 11 3/8" 1 dz  
**CB-94** 13" 1 dz



Square Plate

**CB-22S** 8 1/2" 2 dz  
**CB-8S** 9 1/2" 1 dz



Rectangle Plate

**CB-R20** 11 3/8" x 7" 1 dz  
**CB-R28** 14 1/2" x 7" 1 dz

CRYSTAL BAY ■ BOWLS



Soup Plate

**CB-3** 8 5/8" 9 oz 2 dz



Pasta Bowl Deep With Rim

**CB-23** 12" 20 oz 1 dz



Gourmet Bowl

**CB-G3** 8 7/8" 4 oz 2 dz  
**CB-G26** 10 5/8" 6 oz 1 dz



Coupe Paste Bowl

**CB-84** 10 5/8" 32 oz 1 dz



Fruit Bowl

**CB-11** 5 3/8" 9 oz 3 dz



Grapefruit Bowl

**CB-10** 6 1/2" 14 oz 3 dz



Bouillon Stacking  
(Fits CB-2)

**CB-4S** 3 1/8" 8 oz 3 dz



Bouillon Lid For CB-4S

**CB-4SL** 2 3/8" 3 dz

CRYSTAL BAY ■ CUPS / MUGS & SAUCERS



Cup A.D. Stacking  
(Fits CB-36)

**CB-35** 2 1/4" 3 1/2 oz 3 dz



Cup Stacking (Fits CB-2)

**CB-1** 3 1/8" 7 oz 3 dz



Cup Stacking (Fits CB-2)

**CB-1S** 3 1/8" 8 oz 3 dz



Mug Stacking (Fits CB-2)

**CB-17** 3 1/8" 9 oz 3 dz



Saucer A.D.

**CB-36** 4 7/8" 3 dz



Saucer Double Well

**CB-2** 6" 3 dz

CRYSTAL BAY ■ ACCESSORIES



Tea Pot

**CB-TP** 16 oz 3 dz

Tea Pot Lid for CB-TP

**CB-TL** 1 dz



Creamer

**CB-CM** 5 1/2 oz 4 dz



Sugar Packet Holder

**CB-PH** 4 3/8" x 3" x 2" 4 dz



Salt Shaker

**CB-SS** 2 1/4" 4 dz

Pepper Shaker

**CB-PS** 2 1/4" 4 dz



Sauce Boat

**CB-SB** 6 1/8" 10 oz 3 dz



Black Diamond  
Available Pattern

# ALPINE



Bright white, wider rim, flat profile – the perfect canvas for every chef – Alpine! Alpine makes it “all about the food” with its classic shape featuring a wide rim and perfect plating area.

- Exceptionally strong, light, porcelain body
- The full range offering makes Alpine supremely versatile
- Perfect for decorating, Alpine includes many stock made to order patterns
- Pair with Universal accessories to complete your tabletop

## FEATURES



## ALPINE ■ PLATES



Plate

- AL-6 6 1/2" 3 dz
- AL-7 7" 3 dz
- AL-8 9 1/4" 2 dz
- AL-16 10 1/2" 1 dz



Coupe Plate

- AL-20 11 1/2" 1 dz
- AL-21 12 1/4" 1 dz
- AL-25 13 3/4" 1 dz



Oval Platter

- AL-12 10 1/4" 2 dz
- AL-14 12" 1 dz
- AL-40 14" 1 dz



Oblong Platter

- AL-93 11 3/8" 1 dz
- AL-94 13" 1 dz



Rectangular Platter

- AL-R25-B 13 3/4" x 7 1/2" 1 dz

## ALPINE ■ BOWLS



Soup Plate

- AL-3 8 5/8" 11 oz 2 dz



Pasta Bowl Deep with Rim

- AL-23 12" 21 oz 1 dz



Coupe Pasta Bowl

- AL-84 10 5/8" 45 oz 1 dz
- AL-85 12 1/4" 64 oz 0.5 dz
- AL-86 14" 100 oz 0.5 dz



Salad Bowl

- AL-75 5 1/2" 12 oz 3 dz



Fruit Bowl

- AL-11 5 3/8" 8 oz 3 dz



Grapefruit Bowl

- AL-10 6 1/2" 14 oz 3 dz



Bouillon Stacking (Fits AL-2)

- AL-4S 4" 10 oz 3 dz

## ALPINE ■ CUPS & SAUCERS



Cup A.D. Stacking (Fits AL-36)

- AL-35 2 5/8" 4 oz 3 dz



Cup Stacking (Fits AL-2)

- AL-1S 3" 8 oz 3 dz



Cup (Fits AL-2)

- AL-1 3 1/2" 8 1/2 oz 3 dz



Saucer A.D.

- AL-36 4 3/4" 3 dz



Saucer

- AL-2 6" 3 dz



Blueberry

Daisies

Larkspur

Olive

Presidio

## Available Patterns



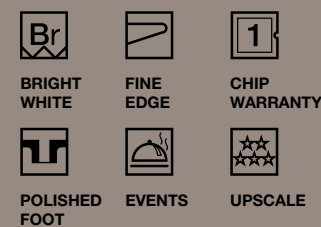
# GRASS VALLEY



Bold, distinctive, strong – Grass Valley’s embossment makes a statement and adds a bit of verve to your tabletop. Grass Valley works as a complete shape or accent your standard tabletop with a single piece to make a statement.

- Porcelain body provides the perfect color to compliment food
- Exceptional strength to weight makes Grass Valley strong and light
- Pair with Universal accessories to complete your tabletop

## FEATURES



## GRASS VALLEY ■ PLATES



**Plate**  
**GV-6** 6 1/2" 3 dz  
**GV-7** 7 1/4" 3 dz  
**GV-8** 9" 2 dz



**Oblong Platter**  
**GV-16** 10 5/8" 1 dz  
**GV-20** 11 1/2" 1 dz  
**GV-21** 12" 1 dz  
**GV-93** 11 3/8" 1 dz  
**GV-94** 13" 1 dz

## GRASS VALLEY ■ BOWLS



**Pasta Bowl/Rim Soup**  
**GV-3** 9" 10 oz 2 dz



**Pasta Bowl Deep with Rim**  
**GV-23** 11 3/8" 18 oz 1 dz



**Fruit Bowl**  
**GV-11** 5 1/4" 9 oz 3 dz



**Grapefruit Bowl**  
**GV-10** 6 3/8" 14 oz 3 dz



**Bouillon Stacking (Fits GV-2)**  
**GV-4S** 3 1/2" 8oz 3 dz

## GRASS VALLEY ■ CUPS / MUGS & SAUCERS



**Cup A.D. Stacking (Fits GV-36)**  
**GV-35** 2 1/4" 3 1/2 oz 3 dz



**Cup Stacking (Fits GV-2)**  
**GV-1S** 3 1/8" 8 oz 3 dz



**Cup (Fits GV-2)**  
**GV-1** 3 1/4" 7 oz 3 dz



**Mug Stacking (Fits GV-2)**  
**GV-17** 3 1/8" 10 oz 3 dz



**Saucer A.D**  
**GV-36** 4 15/16" 3 dz



**Saucer Double Well**  
**GV-2** 6 1/4" 3 dz

## GRASS VALLEY ■ ACCESSORIES



**Tea Pot**  
**GV-TP** 16 oz 3 dz



**Creamer**  
**GV-CM** 5 1/2 oz 4 dz



**Sugar Packet Holder**  
**GV-PH** 4 3/8" x 2 7/8" x 2" 4 dz



**Salt Shaker**  
**GV-SS** 2 1/4" 4 dz  
**Pepper Shaker**  
**GV-PS** 2 1/4" 4 dz



Blueberry Cilantro Mango Plum Pumpkin  
**Available Patterns**

# PALM



## PALM ■ PLATES



**Plate**  
**PA-6** 6 1/2" 3 dz  
**PA-7** 7" 3 dz  
**PA-8** 9 1/4" 2 dz  
**PA-16** 10 3/8" 1 dz  
**PA-21** 12" 1 dz



**Oblong Platter**  
**PA-93** 11 3/8" 1 dz  
**PA-94** 12" 1 dz

## PALM ■ BOWLS



**Pasta Bowl/Rim Soup**  
**PA-3** 9" 11 oz 2 dz



**Pasta Bowl Deep With Rim**  
**PA-23** 12" 20 oz 1 dz



**Pasta Bowl**  
**PA-84** 10 5/8" 32 oz 1 dz



**Bouillon Stacking  
(Fits PA-2)**  
**PA-4S** 4" 8 oz 3 dz



**Soup / Cereal Bowl**  
**PA-10** 6 1/2" 11 oz 3 dz

## PALM ■ CUPS & SAUCERS



**Cup Stacking (Fits PA-2)**  
**PA-1S** 3 1/4" 6 oz 3 dz



**Saucer**  
**PA-2** 6" 3 dz

The timeless embossment on Palm is perfect for many applications, from better quality healthcare, senior living facilities, to private clubs. Combined with a bright white porcelain body, Palm creates an enduring tabletop.

- *Most popular sizes and shapes available for all establishments*
- *Mid rim design is extremely versatile*
- *Pair with Universal accessories to complete your tabletop*

### FEATURES



**Somersett Key Largo Napa Valley Orient Express**

### Available Patterns





# ORGANICS

*Today more than ever consumers are demanding fresh food – organic, sustainable, and locally sourced. Discerning diners want authenticity, not just in the food and décor, but authenticity in the serveware is expected as well. Moving beyond traditional porcelain dinnerware helps achieve that objective – natural, organic product and product created in the hues of nature work perfectly. Enter Orbit and Obsidian, new from Vertex. Both of these amazing product lines help to complete a Chef's creation taking it from ordinary to extraordinary.*

## **HIGHLIGHTS:**

- *Rustic colors and finishes*
- *Simple and elemental shapes*
- *Rich textures stand out and lend a vibrancy to food*
- *Multiple raw materials*
- *Four ranges in the collection*
  - *Orbit*
  - *Obsidian*
  - *Elements*
  - *Slate*
- *Best uses*
  - *Restaurants*
  - *Concierge lounges*
  - *Upscale*

# ORBIT



When astronomical inspirations collide with unprecedented concepts for groundbreaking dinnerware, the outcome is beyond our world. Table setting soars to new heights with the Orbit collection's trend-setting asymmetrical coupe shapes and unique accessory items, all in matte black porcelain. Masterfully forged, creating incredibly strong and scratch resistant bodies, Orbit's performance is never compromised.

- True black porcelain
- Trend setting sheer coupe shape and extremely unique accessory items
- Strong bodies with thermal properties

## ORBIT ■ PLATES



	Plate		
<b>OR-6</b>	6 1/4"	3 dz	
<b>OR-22</b>	8 1/2"	2 dz	
<b>OR-16</b>	10 5/8"	1 dz	



	Coupe Platter		
<b>OR-39</b>	8 1/4" x 5 7/8"	2 dz	
<b>OR-12</b>	10 5/8" x 7 1/2"	2 dz	
<b>OR-13</b>	11 3/4" x 8 1/2"	1 dz	
<b>OR-14</b>	14 1/8" x 10 1/4"	1 dz	



	Gourmet Platter		
<b>OR-G12</b>	10 3/8" x 7 7/8"	1 dz	

## ORBIT ■ BOWLS



	Gourmet Bowl		
<b>OR-G76</b>	6"	2.5 oz	2 dz
<b>OR-G77</b>	7"	4.5 oz	2 dz
<b>OR-G78</b>	8"	7 oz	2 dz
<b>OR-G79</b>	9"	8.75 oz	2 dz
<b>OR-G26</b>	10"	11.5 oz	2 dz



	Tilt Bowl		
<b>OR-T10</b>	6 1/4" x 3"	12 oz	1 dz



	Cave Bowl		
<b>OR-CB32</b>	5 3/4" x 3 7/8"	3 oz	3 dz

## ORBIT ■ CUPS & SAUCERS



	Cup (Fits OR-36)		
<b>OR-35</b>	2 1/2"	3 oz	3 dz



	Cup (Fits OR-2)		
<b>OR-1</b>	3 1/2"	9 oz	3 dz



	Saucer			
<b>OR-36</b>	6 1/4" x 3 7/8"	3 dz		
<b>OR-2</b>	7 1/4" x 4 7/8"	3 dz		

## ORBIT ■ ACCESSORIES



	Dip Dish		
<b>OR-67</b>	3 1/8"	4 oz	6 dz

## FEATURES



UPSCALE



EVENTS



EVERYDAY



# OBSIDIAN



With the groundbreaking Obsidian collection, we continuously bring new concepts to tableware. Supreme versatility makes Obsidian perfect for optimal presentation applications such as oven to table casseroles, baked desserts or chilled presentations. Masterly manufactured to mimic cast iron aesthetically and functionally without the weight or rusting. Obsidian is dishwasher safe and has a unique texture to camouflage normal wear and tear.

- 100% pure black porcelain
- Freezer to oven compatible
- Super matte finish and still very scratch resistant

## OBSIDIAN ■ PLATES



### Rectangle Plate

<b>OB-R7</b>	10 1/2" x 5 1/4"	2 dz
<b>OB-R20</b>	11 1/2" x 6"	2 dz
<b>OB-R28</b>	13 1/4" x 8"	1 dz

## OBSIDIAN ■ ACCESSORIES



### Oval Baker

<b>OB-WR7</b>	6" x 4 1/2"	7oz	3 dz
<b>OB-WR10</b>	7" x 4 1/2"	10oz	3 dz
<b>OB-WR20</b>	8 1/2" x 6"	20oz	2 dz



### Round Baker

<b>OB-BK23</b>	8 1/2"	23oz	2 dz
----------------	--------	------	------



### Oval Baker

<b>OB-BK24</b>	6" x 9"	24oz	2 dz
----------------	---------	------	------



### Rectangular Baker

<b>OB-BK20</b>	5 3/4"	20 oz	2 dz
<b>OB-BK34</b>	9" x 6 1/2"	34 oz	2 dz



### Casserole / Soup Tureen

<b>OB-5S</b>	5 1/2"	24 oz	1 dz
--------------	--------	-------	------



### Quiche Dish Fluted

<b>OB-Q5</b>	5"	6 oz	2 dz
<b>OB-Q7</b>	7 1/2"	16 oz	2 dz



### Ramekin Fluted

<b>RMK-2-BP</b>	2 1/2"	2 oz	4 dz
<b>RMK-4-BP</b>	3 1/8"	3 oz	3 dz
<b>RMK-6-BP</b>	3 3/8"	4 oz	3 dz



### Souffle Bowl Fluted

<b>OB-60</b>	4 1/2"	10 oz	2 dz
--------------	--------	-------	------



### Mini Round Baker

<b>OB-RBK</b>	3 3/4"	5 oz	3 dz
---------------	--------	------	------



### Mini Oval Baker

<b>OB-OBK</b>	3 1/2"	3 oz	3 dz
---------------	--------	------	------



### Mini Square Baker

<b>OB-SBK</b>	2 3/4"	3 oz	3 dz
---------------	--------	------	------

## FEATURES



UPSCALE



EVENTS



EVERYDAY



# ELEMENTS



An element is the most basic structure in nature, but when properly arranged forges the most amazing creations. Elements dinnerware is a simple but beautiful building block to the perfect tabletop, and when paired together with food is a stunning addition to any operation.

- Popular coupe shapes in round, deep and rectangles
- Matte finish includes white, grey and black colors in all shapes
- Subtle embossing from the center to the rim



## FEATURES



POLISHED  
FOOT



EVENTS



UPSCALE



VOLUME





ELEMENTS ■ PLATES



Coupe Plate

<b>E-6-C</b>	6 1/4"	3 dz	<b>E-16-C</b>	10 3/4"	1 dz
<b>E-6-O</b>	6 1/4"	3 dz	<b>E-16-O</b>	10 3/4"	1 dz
<b>E-6-S</b>	6 1/4"	3 dz	<b>E-16-S</b>	10 3/4"	1 dz
<b>E-8-C</b>	8 7/8"	2 dz			
<b>E-8-O</b>	8 7/8"	2 dz			
<b>E-8-S</b>	8 7/8"	2 dz			



Petite Portion Plate

<b>E-205-C</b>	11 1/4"	(5 1/2" well)	1 dz
<b>E-205-O</b>	11 1/4"	(5 1/2" well)	1 dz
<b>E-205-S</b>	11 1/4"	(5 1/2" well)	1 dz



Petite Portion Plate

<b>E-207-C</b>	11 1/4"	(7" well)	1 dz
<b>E-207-O</b>	11 1/4"	(7" well)	1 dz
<b>E-207-S</b>	11 1/4"	(7" well)	1 dz



Coupe Oval Platter

<b>E-12-C</b>	9 1/2"	2 dz	<b>E-14-C</b>	13 1/4"	1 dz
<b>E-12-O</b>	9 1/2"	2 dz	<b>E-14-O</b>	13 1/4"	1 dz
<b>E-12-S</b>	9 1/2"	2 dz	<b>E-14-S</b>	13 1/4"	1 dz
<b>E-13-C</b>	11 1/2"	1 dz			
<b>E-13-O</b>	11 1/2"	1 dz			
<b>E-13-S</b>	11 1/2"	1 dz			



Rectangle Plate

<b>E-R39-C</b>	8 1/2" x 3 3/4"	2 dz	<b>E-R14-C</b>	14" x 6 1/2"	1 dz
<b>E-R39-O</b>	8 1/2" x 3 3/4"	2 dz	<b>E-R14-O</b>	14" x 6 1/2"	1 dz
<b>E-R39-S</b>	8 1/2" x 3 3/4"	2 dz	<b>E-R14-S</b>	14" x 6 1/2"	1 dz
<b>E-R12-C</b>	10 1/2" x 4 3/4"	1 dz			
<b>E-R12-O</b>	10 1/2" x 4 3/4"	1 dz			
<b>E-R12-S</b>	10 1/2" x 4 3/4"	1 dz			

ELEMENTS ■ BOWLS



Deep Oval Bowl

<b>E-B39-C</b>	8 1/2"	32 oz	1 dz	<b>E-B14-C</b>	12 1/2"	65 oz	1 dz
<b>E-B39-O</b>	8 1/2"	32 oz	1 dz	<b>E-B14-O</b>	12 1/2"	65 oz	1 dz
<b>E-B39-S</b>	8 1/2"	32 oz	1 dz	<b>E-B14-S</b>	12 1/2"	65 oz	1 dz
<b>E-B12-C</b>	10 1/2"	38 oz	1 dz				
<b>E-B12-O</b>	10 1/2"	38 oz	1 dz				
<b>E-B12-S</b>	10 1/2"	38 oz	1 dz				



Entrée Bowl

<b>E-3-C</b>	9"	1 dz	<b>E-23-C</b>	11 1/2"	1 dz
<b>E-3-O</b>	9"	1 dz	<b>E-23-O</b>	11 1/2"	1 dz
<b>E-3-S</b>	9"	1 dz	<b>E-23-S</b>	11 1/2"	1 dz



Rice Bowl

<b>E-B40-C</b>	4 1/4"	10 oz	3 dz
<b>E-B40-O</b>	4 1/4"	10 oz	3 dz
<b>E-B40-S</b>	4 1/4"	10 oz	3 dz



Pasta/Salad Bowl

<b>E-80-C</b>	7"	24 oz	2 dz
<b>E-80-O</b>	7"	24 oz	2 dz
<b>E-80-S</b>	7"	24 oz	2 dz



Gourmet Bowl

<b>E-G23-C</b>	11 7/8"	1 dz
<b>E-G23-O</b>	11 7/8"	1 dz
<b>E-G23-S</b>	11 7/8"	1 dz



Bouillon Stacking  
(Fits E-2-C/O/S)

<b>E-4S-C</b>	3 7/8"	9 oz	3 dz
<b>E-4S-O</b>	3 7/8"	9 oz	3 dz
<b>E-4S-S</b>	3 7/8"	9 oz	3 dz



Rectangular Dish

<b>E-R7-C</b>	7 1/2"	5 oz	3 dz	<b>E-R16-C</b>	10"	12 oz	2 dz
<b>E-R7-O</b>	7 1/2"	5 oz	3 dz	<b>E-R16-O</b>	10"	12 oz	2 dz
<b>E-R7-S</b>	7 1/2"	5 oz	3 dz	<b>E-R16-S</b>	10"	12 oz	2 dz

ELEMENTS ■ CUPS & SAUCERS / ACCESSORIES



Cup (Fits E-2C/O/S)

<b>E-1-C</b>	3 1/4"	12 oz	3 dz
<b>E-1-O</b>	3 1/4"	12 oz	3 dz
<b>E-1-S</b>	3 1/4"	12 oz	3 dz



Saucer

<b>E-2-C</b>	6 1/2"	3 dz
<b>E-2-O</b>	6 1/2"	3 dz
<b>E-2-S</b>	6 1/2"	3 dz



Oval Baker

<b>E-66-C</b>	7 1/8" x 4 3/8"	8 oz	3 dz
<b>E-66-O</b>	7 1/8" x 4 3/8"	8 oz	3 dz
<b>E-66-S</b>	7 1/8" x 4 3/8"	8 oz	3 dz



Ovalado Sauce Bowl

<b>E-OSB-C</b>	4 1/4" x 3 1/4"	4 oz	4 dz
<b>E-OSB-O</b>	4 1/4" x 3 1/4"	4 oz	4 dz
<b>E-OSB-S</b>	4 1/4" x 3 1/4"	4 oz	4 dz



C = Chalk



O = Onyx



S = Stone

Available Colors

# SLATE

## SLATE ■ PLATES



Meals come alive against the rich tones and textures of natural slate. Dark hues lend an extra vibrancy to food, while Slate's unique design is a perfect backdrop to showcase any cuisine. A variety of shapes and sizes makes finding the perfect vessel for your culinary creations easy. Make your cuisine the center of attention and give your guests an unforgettable dining experience with Slate by Vertex.

- *Made of natural stone*
- *Available in a variety of shapes and sizes*



### Rectangle Plate

<b>S-R16</b>	9 3/4" x 4 3/4"	2 dz
<b>S-R21</b>	12" x 6"	1 dz
<b>S-R211</b>	12" x 7 3/4"	0.5 dz
<b>S-R28</b>	15 3/4" x 9 3/4"	0.5 dz



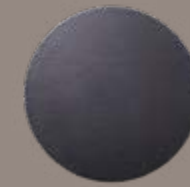
### Engraved Rectangle Plate

<b>S-E211</b>	12" x 7 3/4"	0.5 dz
<b>S-E28</b>	15 3/4" x 12"	0.5 dz



### Oyster Plate

<b>S-O20</b>	11 1/8" x 6"	1 dz
<b>S-O28</b>	16" x 7 1/2"	0.5 dz



### Round Plate

<b>S-8</b>	8"	1 dz
<b>S-16</b>	9 3/4"	1 dz
<b>S-21</b>	11 7/8"	0.5 dz

## FEATURES



UPSCALE



EVENTS



EVERYDAY

## SLATE PLATE IS A NATURAL STONE PRODUCT

Individual slate pieces may vary in thickness throughout the vessel area, which is not uncommon.

1. Please handle properly when using to avoid injury
2. Hand wash only: rinse with liquid detergent in clean water or scrub with damp cloth
3. Do not use wire scrubber
4. Do not place slate in the microwave, toaster or oven
5. Please wash and dry before using